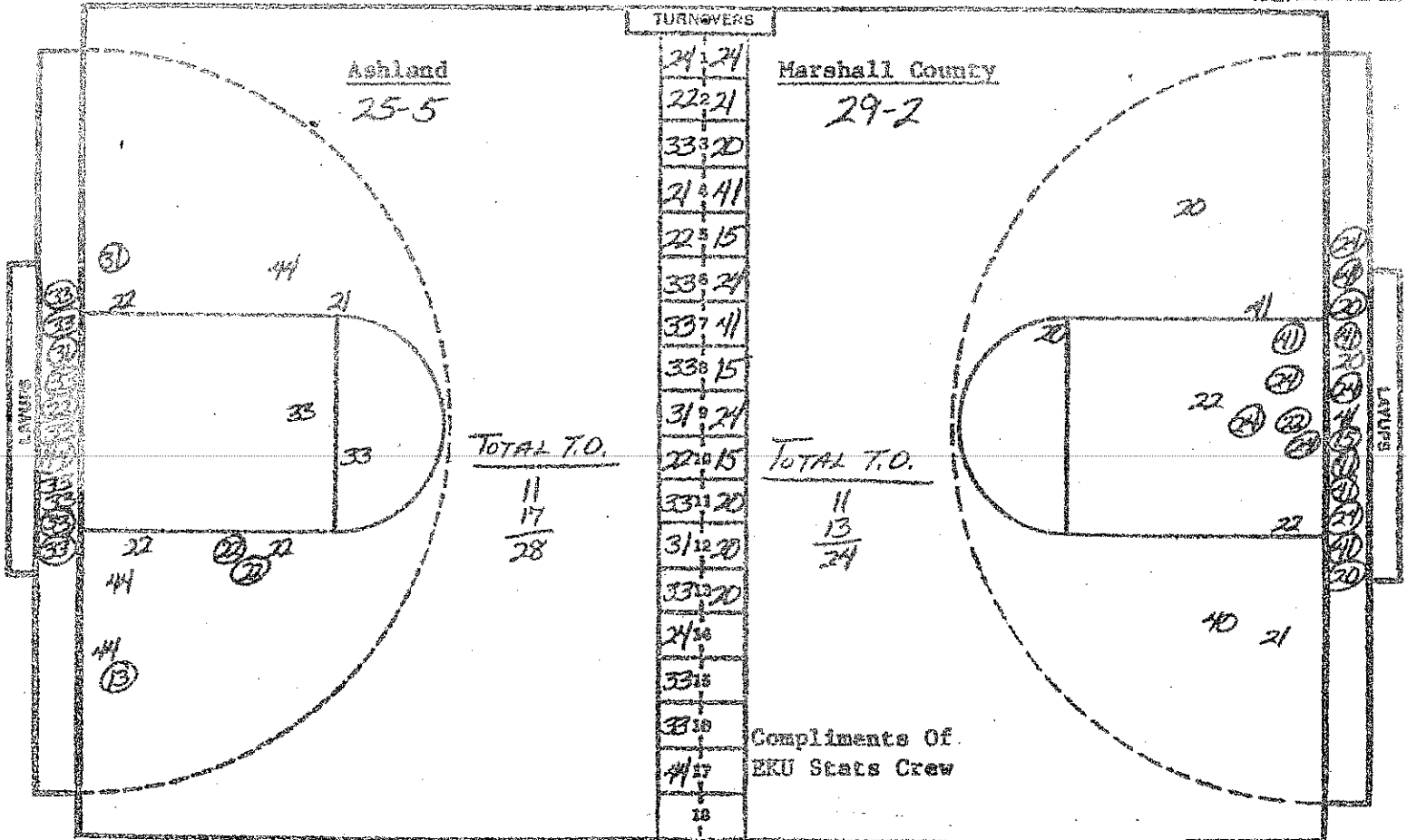


NO.	Marshall County	FG-PGA	FT-FYA	RD	P	TP	A
21	MAGGIE GAPP	3-3	0-1	3	1	6	2
22	RONA POE	5-5	0-0	2	2	10	3
41	CAROL PARKER	3-6	0-0	1	2	6	3
20	PENNY BARRETT	4-5	0-0	6	1	8	1
21	KEN CROWELL	1-5	2-2	1	0	4	2
15	STACE DECK	1-1	0-0	0	1	2	0
		-	-				
		-	-				
		-	-				
		-	-				
		-	-				
		-	-				
		-	-				
		-	-				
		-	-				
TOTALS		17-25	2-3	13	7	36	11
PERCENTS		68.0	66.7	0	TEAM REBOUNDS (NOT IN TOTAL)		

NO.	Ashland	FG-FGA	FT-FYA	RD	P	TP	A
44	SHERY WETARDW	3-6	0-0	2	2	6	0
31	KIM BURGESS	2-3	0-0	3	1	4	0
22	ANDREY ARTHUR	5-9	0-1	2	1	10	2
33	MEME LARGE	1-4	2-2	0	1	4	0
21	SUSIE BIGGS	2-3	1-2	2	1	5	1
21	TANYA TALL	0-0	0-1	2	0	0	0
		-	-				
		-	-				
		-	-				
		-	-				
		-	-				
		-	-				
		-	-				
		-	-				
		-	-				
		-	-				
		-	-				
TOTALS		13-25	3-6	11	6	29	3
PERCENTS		52.0	50.0	0	TEAM REBOUNDS (NOT IN TOTAL)		

SCORE BY HALVES Marshall County 20-16=36  
 OFFICIALS LYNDIA WIMPRESS & HADE DURBIN  
 ATTENDANCE: SESSON Four 2,800 EST.

Ashland 13-16=29



NO.	Ashland	FG-FGA	FT-FTA	RD	P	TP	A
44	SHERRY WITTAROW	4-10	2-2	3	4	10	1
31	KIM BURGESS	4-5	1-2	6	1	9	1
22	ANDREY ARTHUR	8-15	3-6	5	5	19	2
33	MEMIE LARGE	7-14	2-2	2	4	16	1
21	SUSIE BEGGS	2-3	1-2	3	2	5	1
24	JANVA TAIL	0-0	1-3	5	0	1	1
30	MICHELLE COLLINS	0-0	0-0	0	0	0	0
13	JANE COMPTON	1-1	0-0	0	0	2	0
44	MENNY CURWITTE	0-0	0-0	1	1	0	0
20	ANGIE BOGERS	0-0	0-0	0	0	0	0
		-	-				
		-	-				
		-	-				
		-	-				
		-	-	3	0.8		
<b>TOTALS</b>		<b>26-48</b>	<b>10-17</b>	<b>28</b>	<b>17</b>	<b>62</b>	<b>7</b>

PERCENTS 54.2 58.8 0 TEAM REBOUNDS (NOT IN TOTAL)

NO.	Marshall County	FG-FGA	FT-FTA	RD	P	TP	A
24	MARISSE YOPP	9-9	0-2	7	1	18	2
22	RONA BOE	6-8	0-1	3	5	12	3
41	CAROL PARKER	9-14	2-2	2	5	20	5
20	PENNY BARRETT	6-10	4-4	7	2	16	1
21	KIM CROWELL	1-6	4-4	2	0	6	3
15	STACEY DECK	2-2	2-3	1	2	6	2
30	CANDY STONE	0-0	0-0	0	0	0	0
44	DONNA JACKSON	0-0	0-0	0	0	0	0
25	BETH KARLES	0-0	0-0	0	0	0	0
32	JENNIFER COE	0-0	0-0	0	0	0	0
40	KIM SMITH	0-1	0-0	0	0	0	0
34	MICHELLE MARTIN	0-0	0-0	0	0	0	0
		-	-				
		-	-				
		-	-				
		-	-				
<b>TOTALS</b>		<b>33-50</b>	<b>12-16</b>	<b>22</b>	<b>15</b>	<b>78</b>	<b>16</b>

PERCENTS 66.0 75.0 0 TEAM REBOUNDS (NOT IN TOTAL)

SCORE BY HALVES: Ashland 13-16-11-22=62

Marshall County 20-16-18-24=78

OFFICIALS: LYNDIA HAMPRESS & WADE DUBBIN

ATTENDANCE: SLESTON FOUR 2,800 EST.